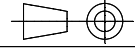
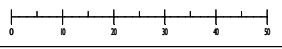




TERWIN INSTRUMENTS LIMITED OWN THE COPYRIGHT OF THIS DRAWING WHICH IS NOT TO BE COPIED, REPRODUCED OR DISCLOSED TO A THIRD PARTY WITHOUT WRITTEN PERMISSION

IF IN DOUBT ASK
DO NOT SCALE

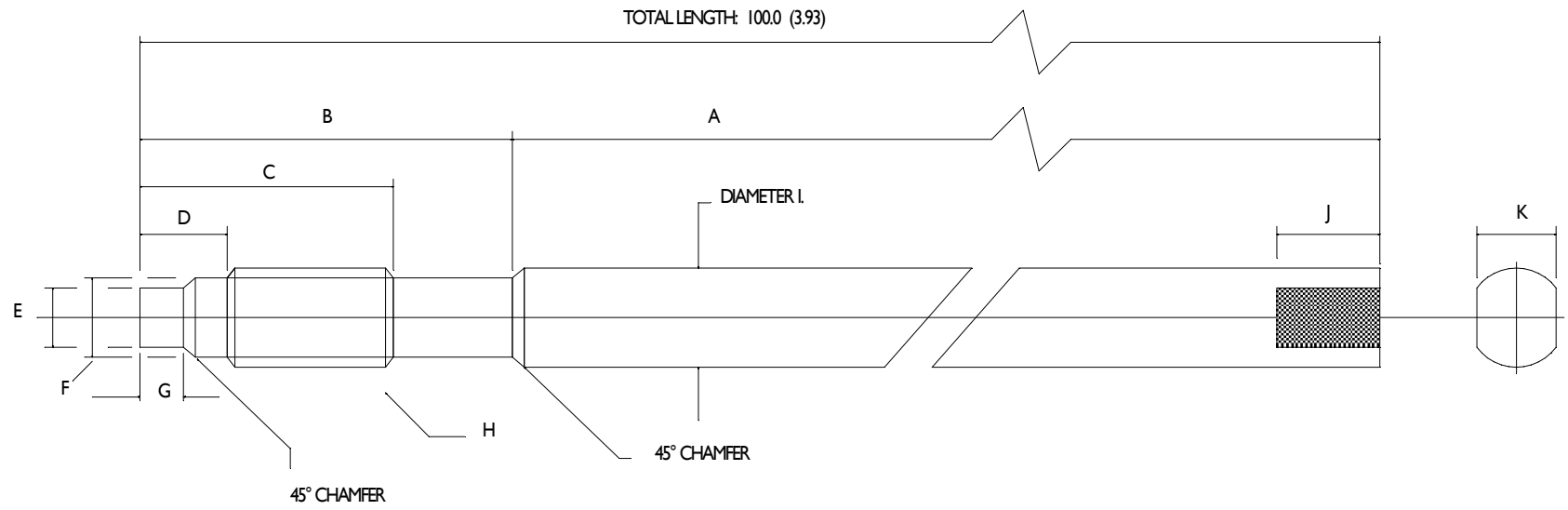


ALL DIMENSIONS
IN MILLIMETRES

USQ.

SCALE
N/A

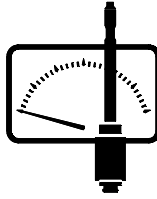
THIS IS A CAD DRAWING
DO NOT ALTER MANUALLY



A	53 (2.08)
B	47 (1.85)
C	31.3 (1.23)
D	12.2 (0.48)
E	7.77±0.03 (0.306±0.001)
F	10.49±0.03 (0.413±0.001)
G	5.54±0.12 (0.218±0.005)
H	1/2-20-UNF-2A
I	12.7 (0.50)
J	12.7 (0.50)
K	10 A/F (0.39)

Terwin Part No: 210-4000-100MM

NOTE: Surface finish to be N6 or better.



Terwin

**Terwin
Instruments
Limited**

Winterbeck Industrial Estate
Orston Lane
BOTTFESFORD
Nottinghamshire
NG13 0AU
Tel: +44 (0) 1949 84 2000
Fax: +44 (0) 1949 84 2004

DRAWN	GVV.
DATE	31.7.2006
CHECKED	T.VV.
APPROVED	GVV.

DRG. NO.	210-4000-100mm
TITLE	PRESSURE TRANSDUCER BLANKING BOLT

CAD REF.	210-4000-100mm
MATERIAL	303 STAINLESS STEEL
TOLERANCES	±0.05 ANGLES ±0.25° CONCENTRICITY: ALL DIAS WITHIN 0.05 T.I.R.

ISS	31.7.2006	IST ISSUE	GVV.
DATE		DESCRIPTION	APPD

A	31.7.2006	IST ISSUE	GVV.
ISS	DATE	DESCRIPTION	APPD

A	31.7.2006	IST ISSUE	GVV.
ISS	DATE	DESCRIPTION	APPD

A	31.7.2006	IST ISSUE	GVV.
ISS	DATE	DESCRIPTION	APPD

A	31.7.2006	IST ISSUE	GVV.
ISS	DATE	DESCRIPTION	APPD